



HYDRAULIC POWER UNIT INSTALLATION GUIDE

This guide will assist you to install the hydraulic power unit on your **Hydra Flaker**. Please read all instructions prior to installation. As a precautionary measure, disconnect the negative battery terminal from the battery prior to installing the valve control and switch. **FILL THE RESERVOIR WITH DTE 26 (ISO 68) HYDRAULIC OIL PRIOR TO MOUNTING ON THE HYDRA FLAKER.**

NEVER allow children or unauthorized personnel access to the controls for your valve control.
ALWAYS use sound judgement and common sense when operating your **Hydra Flaker**.

This kit contains the following:

ITEM NO.	PART NUMBER	DESCRIPTION	QTY.	
1		Power Unit Assembly	1	
2	6801-10-10	10MJ X 10MB 90°	1	
3	6801-LL-10-10	10MJ X 10MB 90° Long	1	
4	6801-08-08	8MJ X 8MB 90°	1	
5	BO-3/8x2-1/4 HEX BO-3/8 Nyloc Nut	Hose Clamp	1	
6		3/8" X 2-1/4" Bolt	1	
7		3/8" Nyloc Nut	1	
8	HA-8M3K-12.0	1/2" X 12" Hose #10JIC	1	

HYDRAFLKR

BY **HYDRABED**

9	HA-6M3K-18.0	3/8" X 18" Hose #6JIC w/ Female Quick Coupler	1	
10	HA-6M3K-43.0	3/8" X 43" Hose #8JIC SW w/ Male Quick Coupler	1	
11 12	EL-PCS16	Red battery cable Black battery cable	1 1	
13	BO-5/16X3/4 FLHCS	5/16" x 3/4" Flange head bolt	1	
14	EL-TERM FUSE BLOCK EL-TERMINAL 300 FUSE EL-TERMINAL REDCOVER	Fuse holder 300A Fuse Terminal cover	1 1 1	
15 16	EL-SBC922005	Solenoid wire w/ ring terminal Butt connector	1 1	

HYDRAFLKR

BY HYDRABED

1. Disconnect the existing hydraulic hoses from the fittings in the **Hydra Flaker** valve. Remove the fittings from the valve block and replace them with the provided 10MJ X 10MB 90° (**ITEM 2**) and 10MJ x 10MB 90° Long (**ITEM 3**) fittings. Install the 90° long fitting in the outer port of the valve block. **The short hose and existing fittings will not be reused.** Reinstall the long existing hose onto the 90° long fitting and the provided 1/2" X 12" hose (**ITEM 8**) onto the other 90° fitting. Connect the 8MJ X 8MB 90° fitting (**ITEM 4**) onto the open end of the 1/2" X 12" hose and the existing quick coupler. **Figure 1**

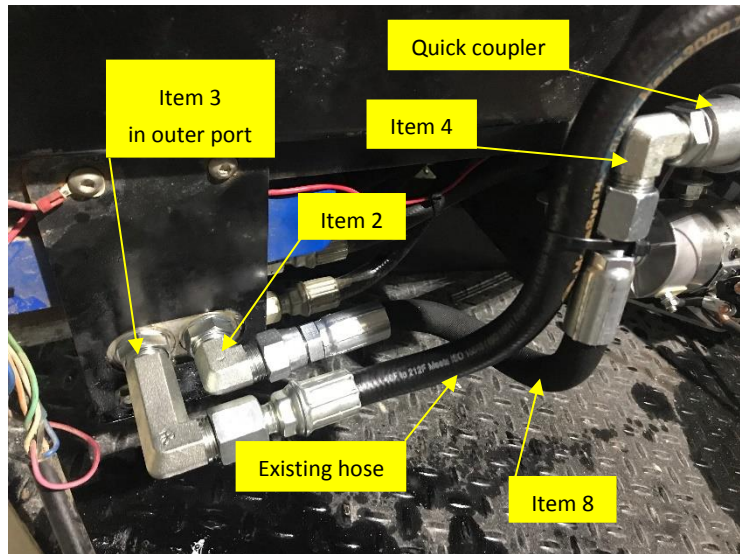


Figure 1

2. Connect the 3/8" X 18" hose (**ITEM 9**) to the fitting in the top port of the power unit valve block and the 3/8" X 43" hose (**ITEM 10**) to the fitting in the bottom port. **Figure 2**

NOTE: FILL THE RESERVOIR WITH DTE 26 (ISO 68) HYDRAULIC OIL PRIOR TO MOUNTING ON THE HYDRA FLAKER.

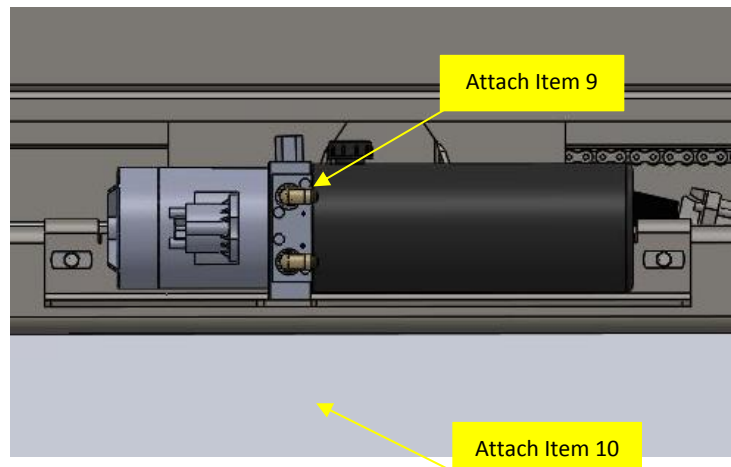
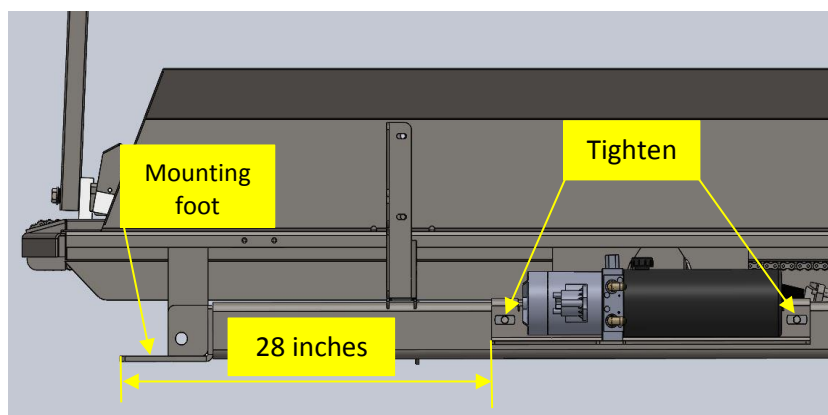


Figure 2

3. Position the Power Unit assembly (**ITEM 1**) by hooking the bracket over the lower front tube of the **Hydra Flaker** base. Place the front of the bracket of the Power Unit assembly 28 inches from the front edge of the mounting foot of the **Hydra Flaker** base. Tighten the two 5/16-inch bolts to secure the power unit assembly in place.

Figure 3

Figure 3



4. Disconnect the long existing hose from the **Hydra Flaker** quick coupler and attach it to the quick coupler of the 3/8" X 18" hose. Attach the 3/8" X 43" hose to the quick coupler on the **Hydra Flaker**. **Figure 4**

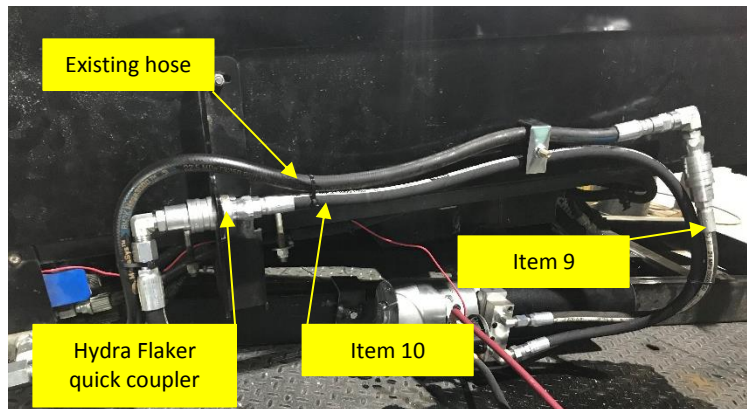
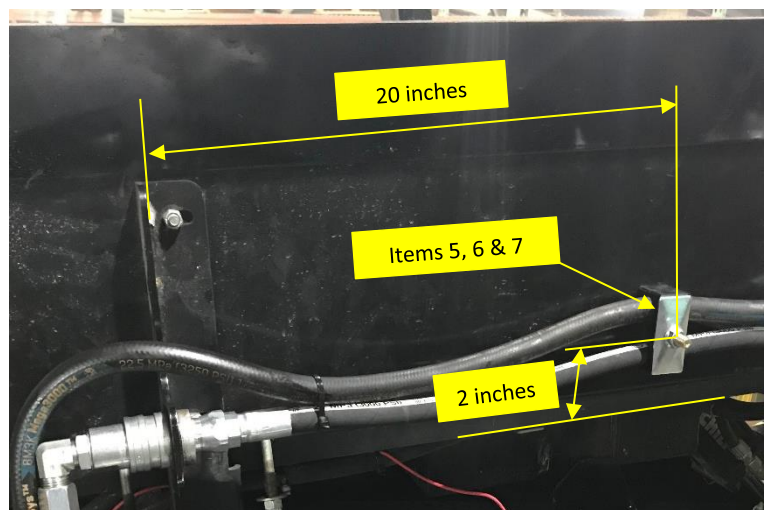


Figure 4

5. Drill a 3/8 inch hole in the **Hydra Flaker** platform cover 20 inches in from the **Hydra Flaker** quick coupler mount bracket and 2 inches above the platform cover floor. Insert the 3/8" X 2-1/4" bolt (**ITEM 6**) through the drilled hole with the threaded end facing toward the front of the **Hydra Flaker**. Thread one half of the hose clamp (**ITEM 5**) onto the bolt and route the two hoses into each of the clamp grooves. Thread the other half of the hose clamp, the metal clamp cover and the 3/8" nyloc nut (**ITEM 7**) onto the bolt and tighten the nut. **Figure 5**



6. Route the red and black battery cables from the vehicle battery along the frame up to the **Hydra Flaker** avoiding any sharp edges and hot surfaces and secure into place. **To prevent accidental injury, do not connect the cables to the battery!** Connect the red cable (+) (**ITEM 11**) to the unoccupied copper terminal (upper terminal) on the power unit solenoid and the black cable (-) (**ITEM 12**) to the lower hole on the power unit valve block using the 5/16" X 3/4" bolt (**ITEM 13**). **Figure 6**

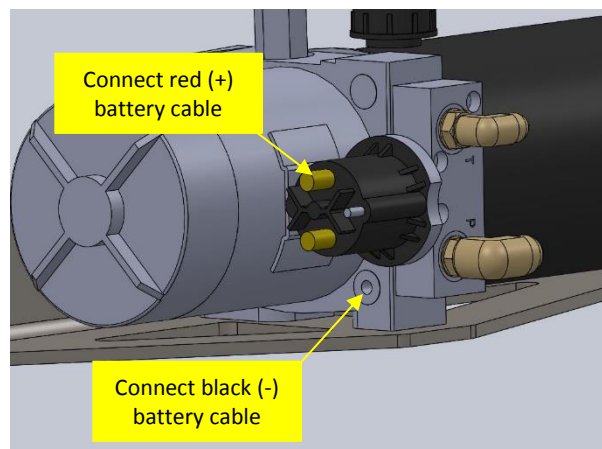


Figure 6

7. Connect the ring terminal of the solenoid wire (**ITEM 15**) onto the stud on the solenoid. Route and secure the solenoid wire along the newly installed hydraulic hoses down to the white wire on the **Hydra Flaker** cable harness at the valve block labeled 'Dump Valve'. Cut off any excess wire from the end to route it along the hoses. Cut the labeled white wire and use the provided butt connector (**ITEM 16**) to splice the solenoid wire onto the white wire. **Figures 7, 8 & 9**

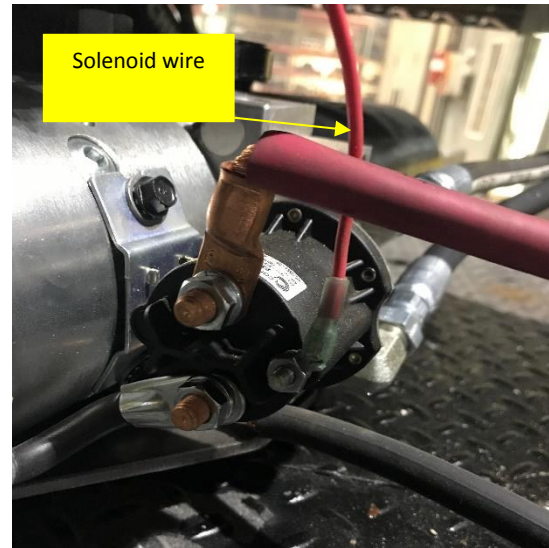


Figure 7

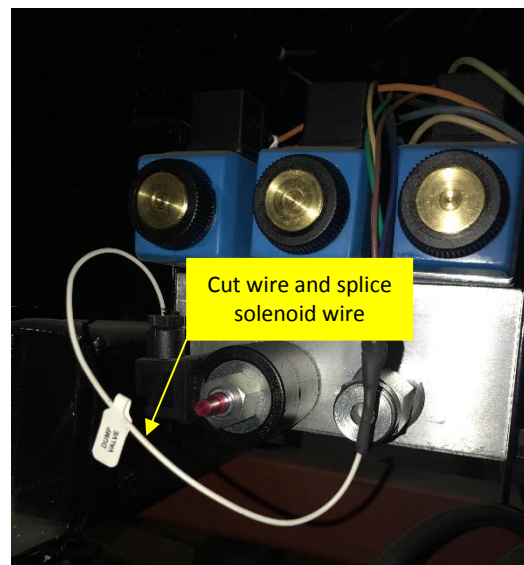


Figure 8

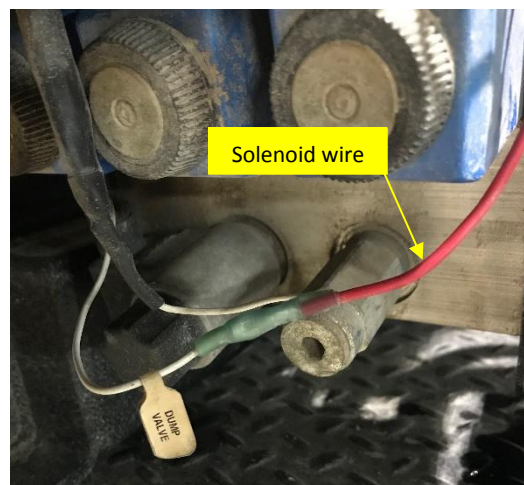


Figure 9



8. At the vehicle battery end, connect the 300A fuse holder (**ITEM 14**) to the red battery cable from the power unit and attach to the positive terminal (+) on the battery. Connect the black battery cable from the power unit to the negative terminal (-) on the battery and reconnect the negative vehicle cable to the battery.